

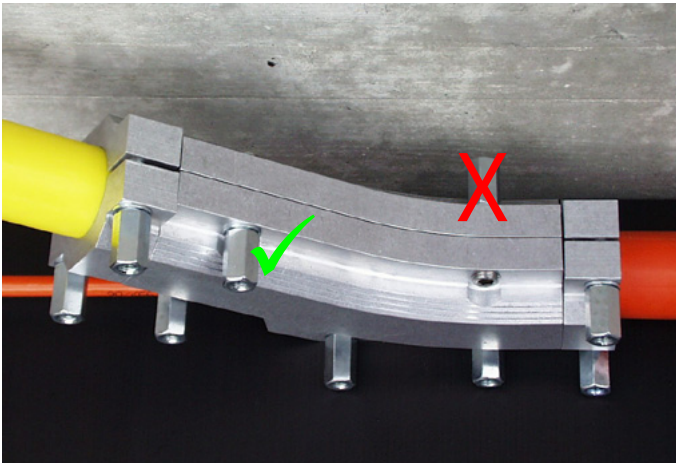
HOW TO USE THE Y50/50 or Y40/40-CONNECTOR

Content / 00

- Orientation of threaded studs..... 01
- Insertion of the already installed cable..... 02
- Mounting of the body on the downstream duct..... 03
- Fixing Y-connector to the ducts 04
- Safety rules 05

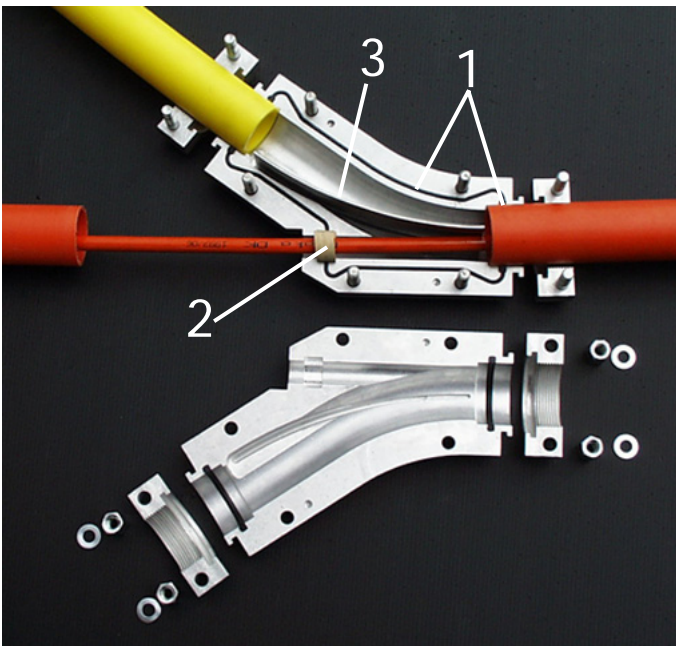
Orientation of threaded studs / 01

- Check the correct orientation of the threaded studs; if necessary, change it to the opposite half-body by means of a male hexagonal key, so as to make the tightening of the nuts easy.

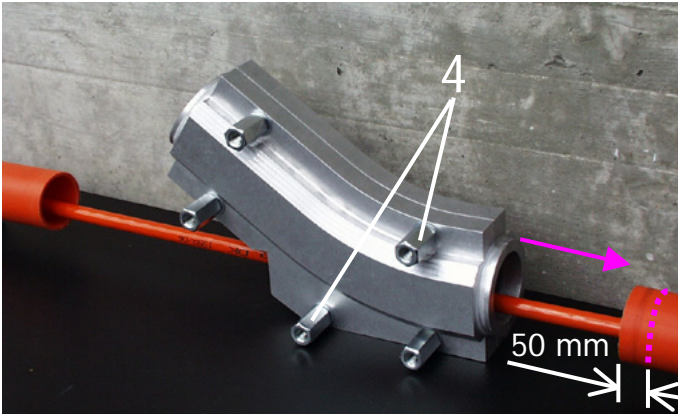


Insertion of the already installed cable / 02

- Check that all 4 round rubber cords (1) are correctly positioned in their corresponding grooves.
- Position the sealing split sleeve (2) on the cable.
- Position the cable guide plate (3) in its corresponding groove.

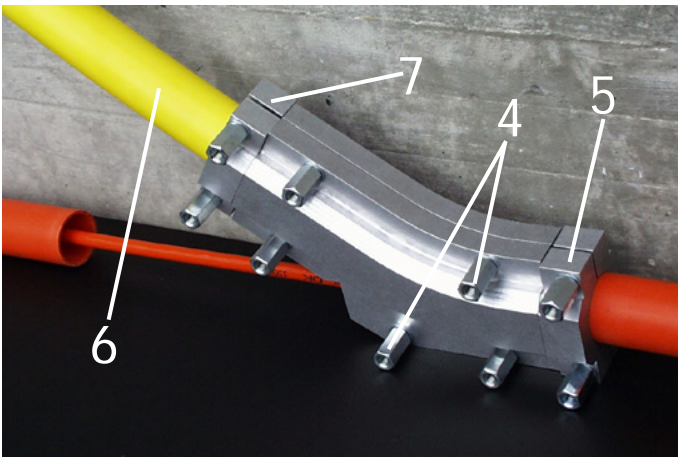


Mounting of the body on the downstream duct / 03



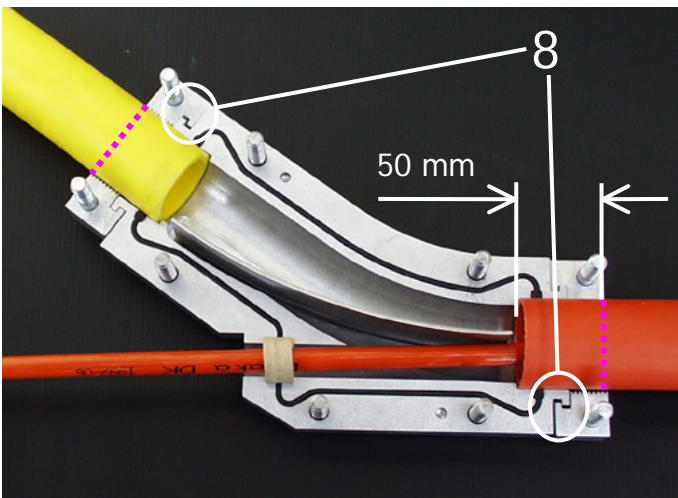
- Apply a mark at 50 mm from the duct end, which is the minimum required length for fastening the duct in the connector.
- Mount the second half of the connector body.
- Tighten loose the 5 locking-nuts (4) so that it becomes possible to push the connector around the downstream duct up to the shoulder.

Fixing Y-connector to the ducts / 04



- Mount jaws (5) on the downstream duct and securely tighten the locking-nuts.
- Check the correct interlocking (8) between the jaws and connector body, and the correct position of the duct in the connector (50 mm).
- As stipulated under §03, install a connecting duct section (6) – with a pressure strength equal or superior to that of the downstream duct - between the connector body and the jetting unit. Mount jaws (7) and securely tighten the locking-nuts.
- Check the correct interlocking (8) between the jaws and connector body, and the correct position of the duct in the connector (50 mm).

- Securely tighten the 5 locking-nuts (4) of the Y-connector.
- The Y-connector is ready for use.



Safety rules / 05

- When using a Y50/50 or Y40/40-connector, the general safety rules applying to the jetting operations must be observed - see operating and maintenance manuals of jetting machines like CABLEJET or SUPERJET.