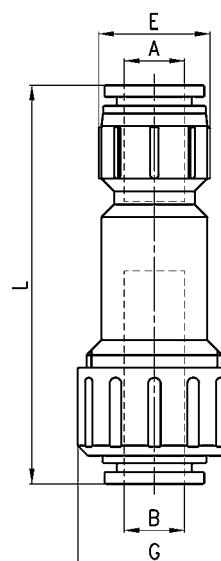


Fluid Block Mod. V4590 - In-line
New


Materials: body = polyamide
 cartridge = nickel-plated brass
 collet = polyacetal
 seal = NBR
 lock claw = stainless steel
 compression nut = polyacetal
 cable seal = silicon

Safety clips are available on request.



Mod.	A	B	E	G	Cable size range	Cable seal colour	L (open)	L (closed)	Weight (g)	Package (pieces)
V4590 5-0,5/3	5	5	14	20.5	0.5/3	BLUE	56	53	11	25
V4590 7-0,5/3	7	7	15.5	22.5	0.5/3	BLUE	67	64	14	25
V4590 7-3/5	7	7	15.5	22.5	3/5	RED	67	64	14	25
V4590 10-0,5/3	10	10	20	27	0.5/3	BLUE	75	71	26	20
V4590 10-3/6	10	10	20	27	3/6	RED	75	71	26	20
V4590 10-6/8	10	10	20	27	6/8	YELLOW	75	71	26	20
V4590 12-3/6	12	12	22.5	30.5	3/6	RED	79.5	75	33	15
V4590 12-6/8	12	12	22.5	30.5	6/8	YELLOW	79.5	75	33	15
V4590 12-8/10	12	12	22.5	30.5	8/10	GREEN	79.5	75	33	15
V4590 14-3/6	14	14	24	31.5	3/6	RED	82	77	37	15
V4590 14-6/8	14	14	24	31.5	6/8	YELLOW	82	77	37	15
V4590 14-8/10	14	14	24	31.5	8/10	GREEN	82	77	37	15

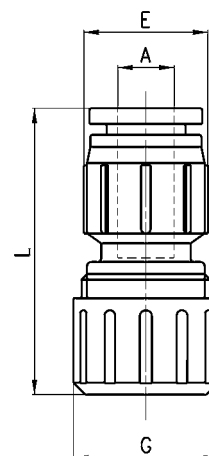
After the Fluid Block is totally open, the cable can be blown and then blocked by turning the gray nut.

The Fluid Block is used at transition points of buildings where gas or water pipes are present.

Fluid Block Mod. V4790 - End line
New


Materials: body = polyamide
 cartridge = nickel-plated brass
 collet = polyacetal
 seal = NBR
 lock claw = stainless steel
 compression nut = polyacetal
 cable seal = silicon

Safety clips are available on request.



Mod.	A	E	G	Cable size range	Cable seal colour	L (open)	L (closed)	Weight (g)	Package (pieces)
V4790 7-2,6/4	7	16	18	2,6/4	RED	35.5	33	7.5	100

After the Fluid Block is totally open, the cable can be blown and then blocked by turning the gray nut.

The Fluid Block is used at transition points of buildings where gas or water pipes are present.